

BRAVO

EAST TOWER



SUITE TYPE	MODEL NAME	SUITE SIZE	EXPOSURE	AVAILABLE STARTING FROM
Studio	RIO 362	362	E	\$483,990
1 Bed	NEW ORLEANS 439	439	N	\$585,990
1 Bed	NEW ORLEANS 473	473	E	\$596,990
1 Bed	NEW ORLEANS 503	503	E	\$607,990
1 Bed	NEW ORLEANS 501	501	E	\$607,990
1 Bed + Den	KYOTO 561	561	W	\$694,990
2 Bed	VALENCIA 649	649	W	\$789,990
2 Bed	VALENCIA 680	680	NE	\$795,990
2 Bed	VALENCIA 692	692	NW	\$805,990
2 Bed	VALENCIA 698	698	W	\$823,990
2 Bed	VALENCIA 697	697	SE	\$835,990
2 Bed	VALENCIA 699	699	SW	\$842,990
DEPOSIT STRUCTURE		INCENTIVES		
\$12,000 on Signing Balance of 5% in 30 days 5% in 300 days 2.5% in 600 days 2.5% in 750 days 5% on Occupancy Deposit Payable to: <u>Dentons Canada LLP In Trust</u>		Free Assignment Capped Development Levies: 699 sq.ft. or Smaller: \$10,000 + HST 700 sq.ft. or Larger: \$12,000 + HST Right To Lease During Interim Occupancy Capped Meter Installation: \$2,000 + HST Free Vertical Blinds		

PARKING

(Available for purchase with 2 bedroom and larger suites only)

\$70,000

LOCKER

\$5,500

MAINTENANCE FEE

\$0.69/sq.ft. (Hydro, Water, Heating/Cooling metered separately)

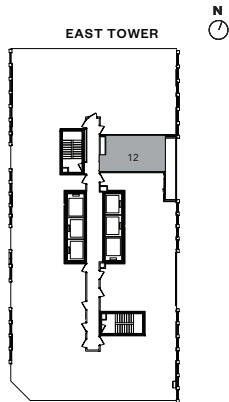
TENTATIVE OCCUPANCY DATE

Q1 2028

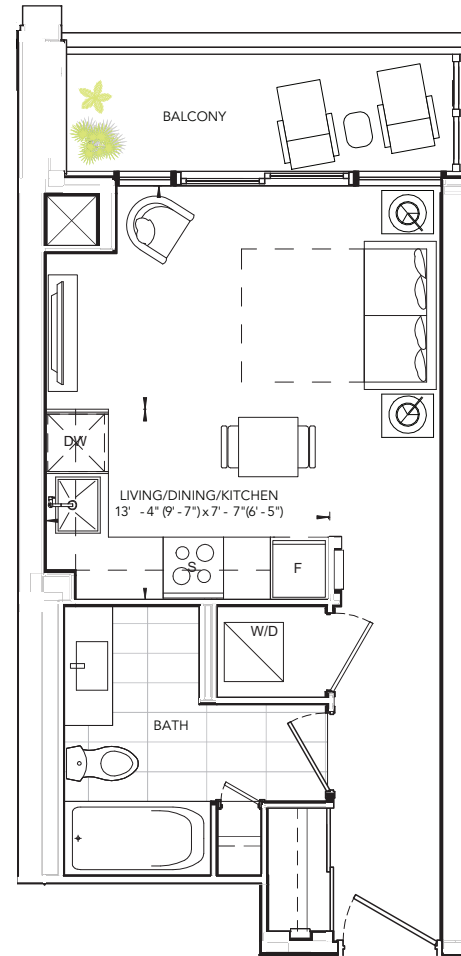


RIO 362

STUDIO, ONE BATH
INTERIOR: 362 SQ.FT. | EXTERIOR: 52 SQ.FT.

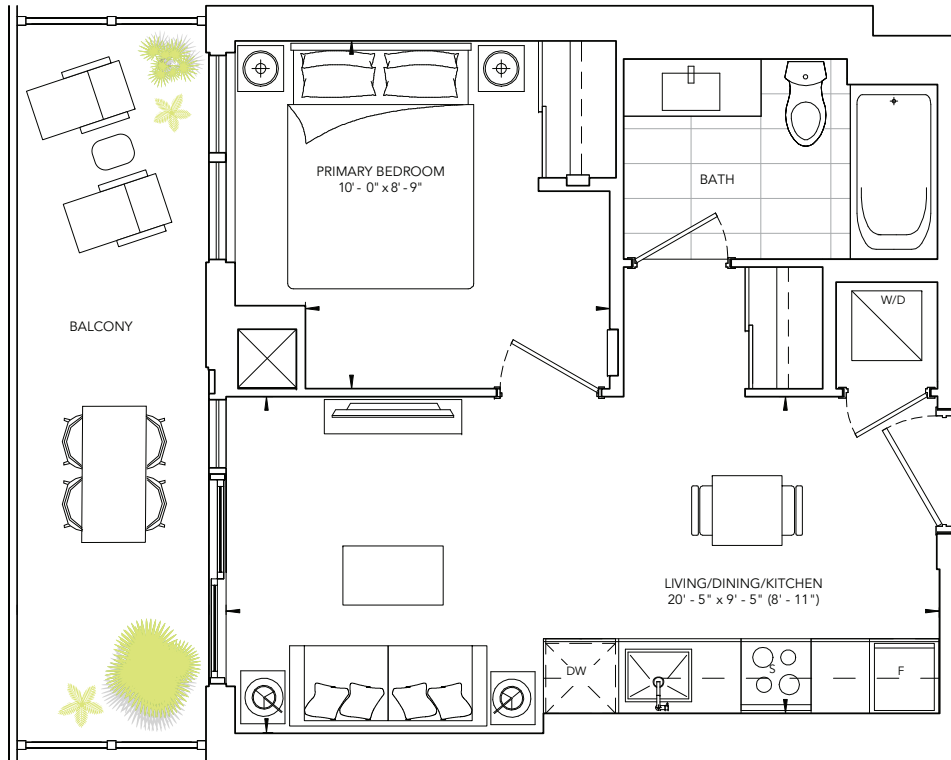
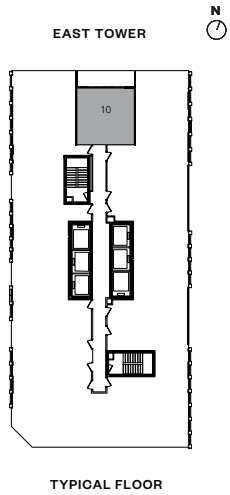


TYPICAL FLOOR



NEW ORLEANS 439

ONE BEDROOM, ONE BATH
 INTERIOR: 439 SQ.FT. | EXTERIOR: 102 SQ.FT.

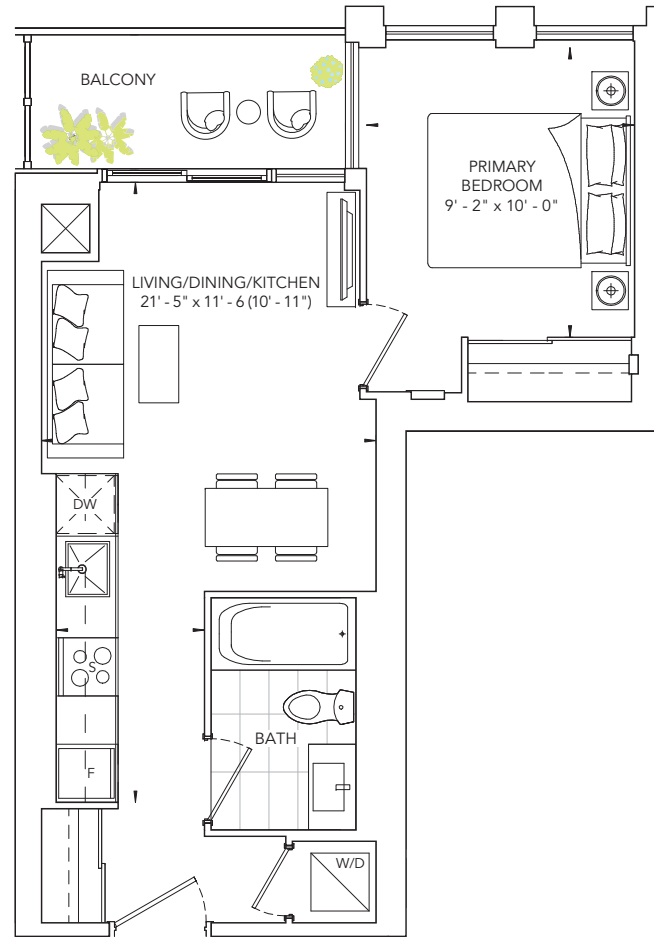
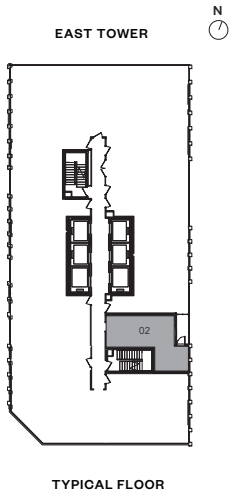


BRAVO

FESTIVAL
South VMC

NEW ORLEANS 473

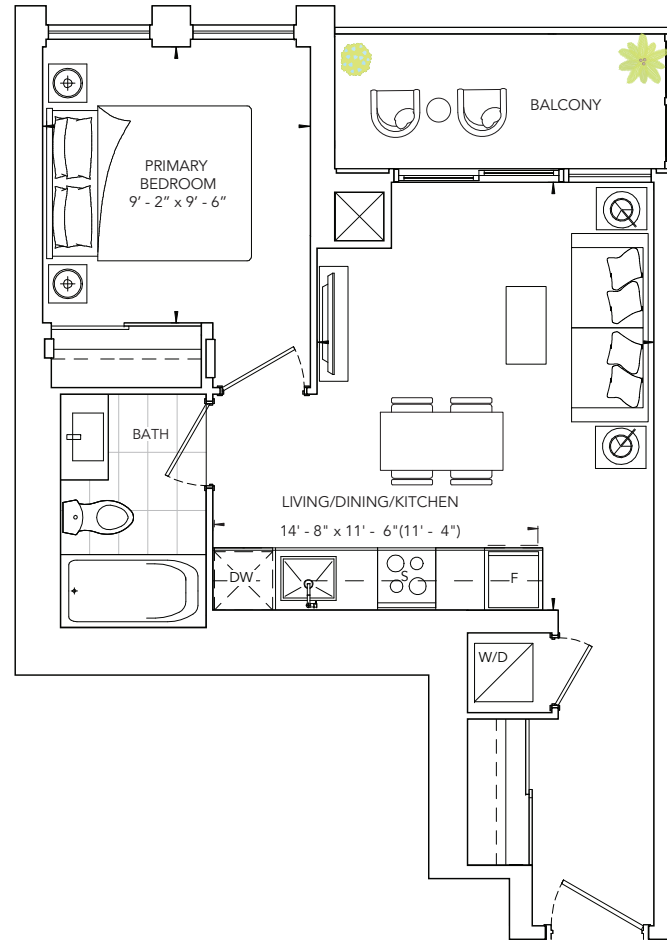
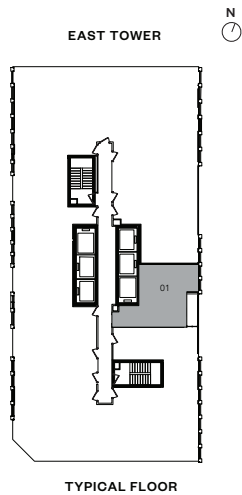
ONE BEDROOM, ONE BATH
INTERIOR: 473 SQ.FT. | EXTERIOR: 43 SQ.FT.



*Prices, sizes and specifications subject to change without notice. E. & O.E. The dimensions shown of this plan are approximate and subject to normal construction variances. Actual useable floor space within the unit may vary from any stated floor areas or dimensions on this plan. Furniture is displayed for illustration purposes only and does not necessarily reflect the electrical plan for the suite. Suites are sold unfurnished. For more information on the method used for calculating the floor area of any unit, reference should be made to Builder Bulletin No. 22 published by Tarion.

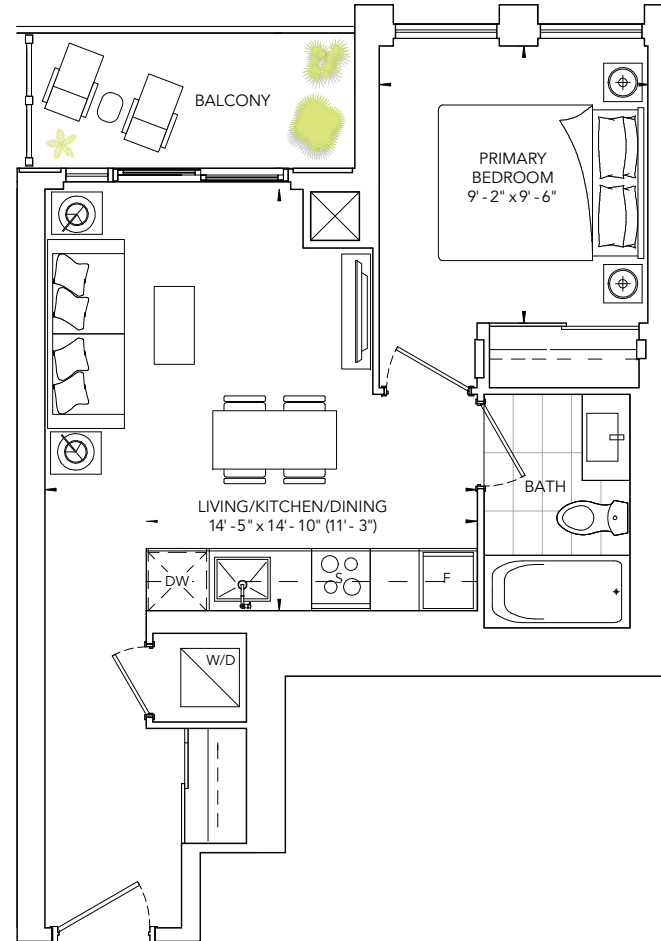
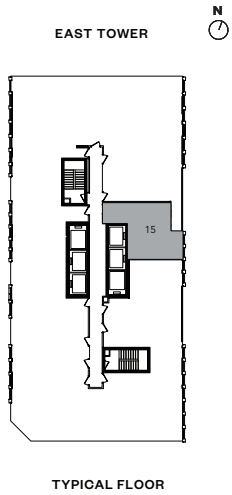
NEW ORLEANS 503

ONE BEDROOM, ONE BATH
 INTERIOR: 503 SQ.FT. | EXTERIOR: 45 SQ.FT.



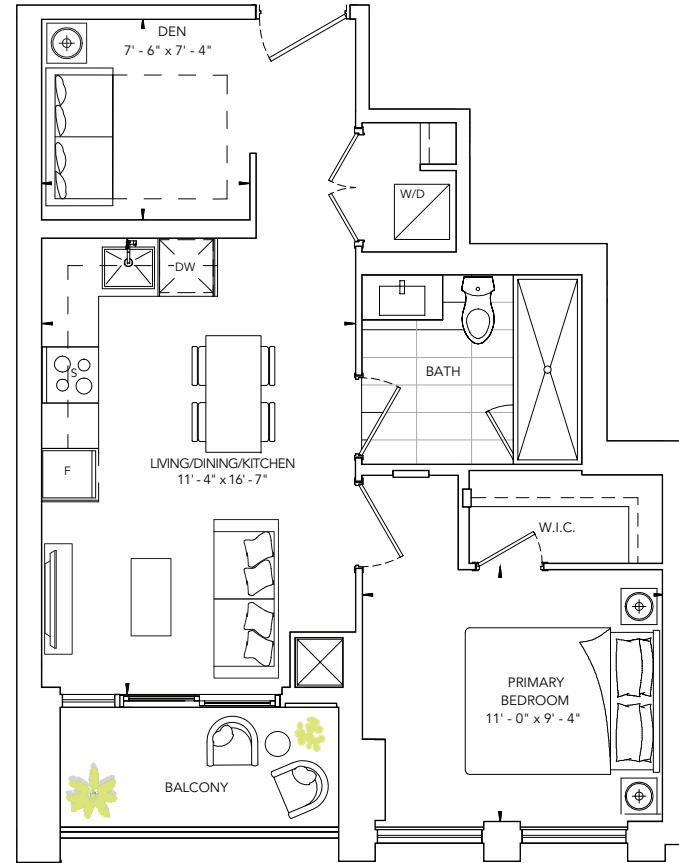
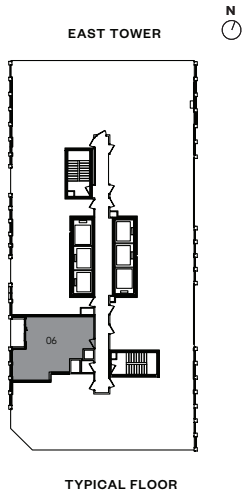
NEW ORLEANS 501

ONE BEDROOM, ONE BATH
 INTERIOR: 501 SQ.FT. | EXTERIOR: 44 SQ.FT.



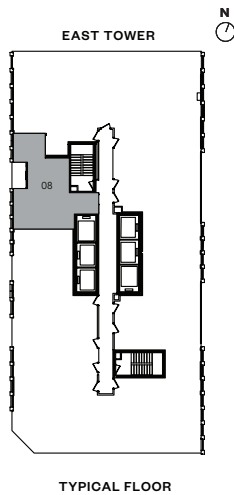
KYOTO 561

ONE BEDROOM + DEN, ONE BATH
 INTERIOR: 561 SQ.FT. | EXTERIOR: 40 SQ.FT.



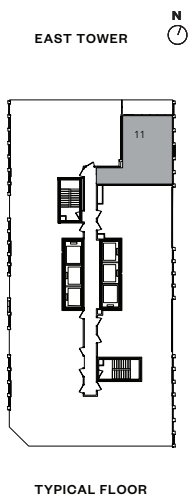
VALENCIA 649

TWO BEDROOM, TWO BATH
 INTERIOR: 649 SQ.FT. | EXTERIOR: 36 SQ.FT.



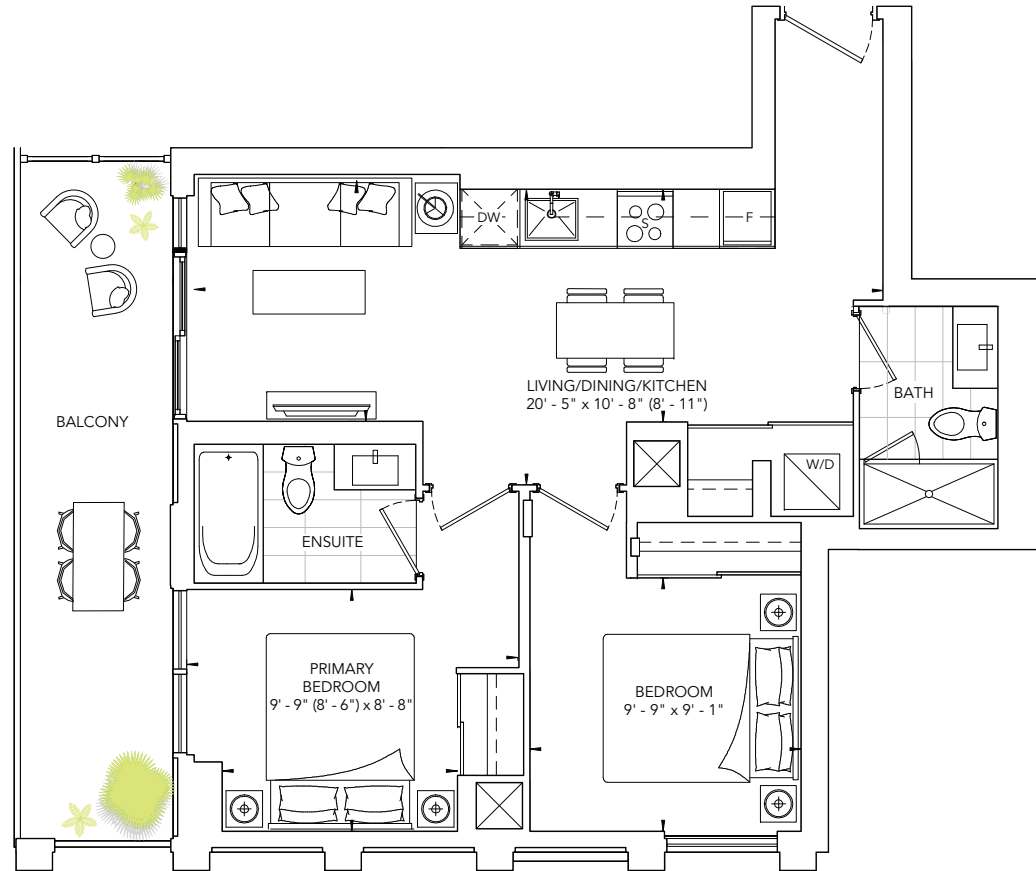
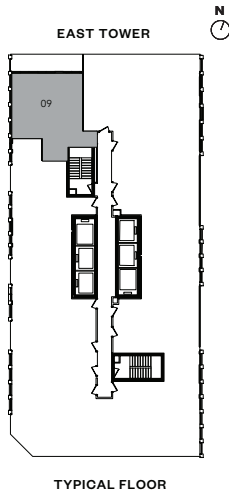
VALENCIA 680

TWO BEDROOM, TWO BATH
 INTERIOR: 680 SQ.FT. | EXTERIOR: 99 SQ.FT.



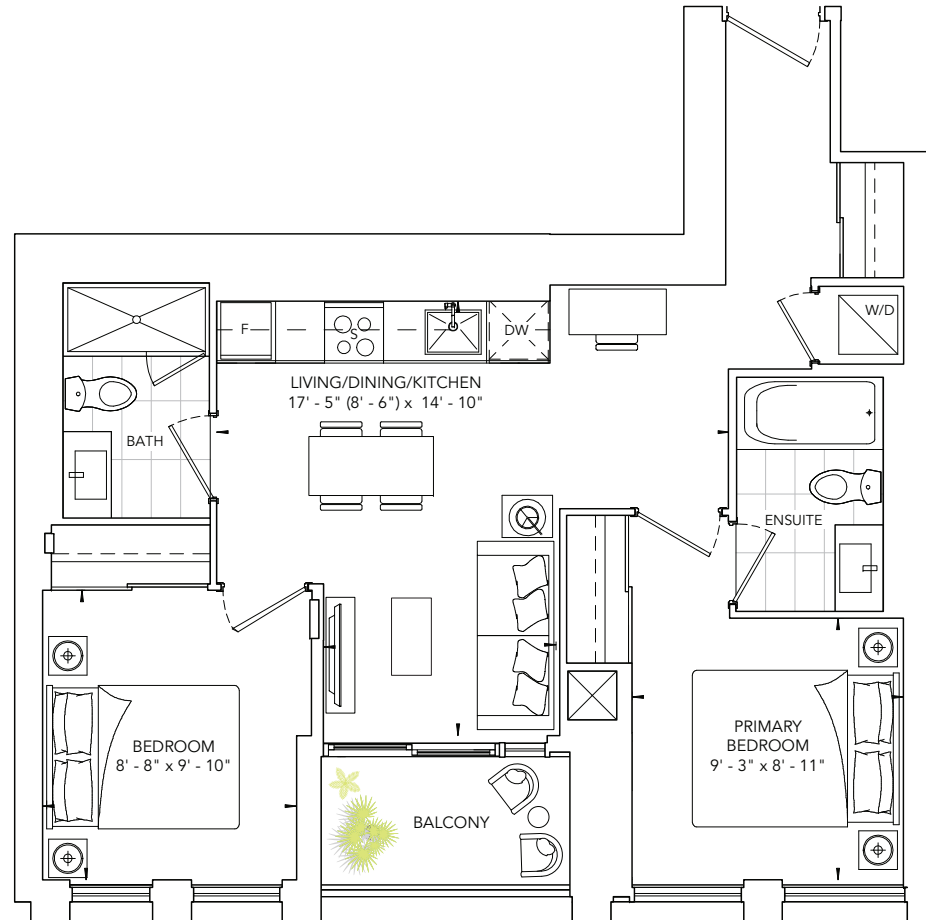
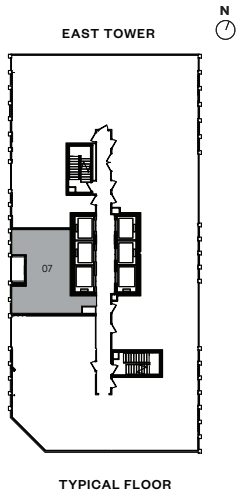
VALENCIA 692

TWO BEDROOM, TWO BATH
 INTERIOR: 692 SQ.FT. | EXTERIOR: 118 SQ.FT.



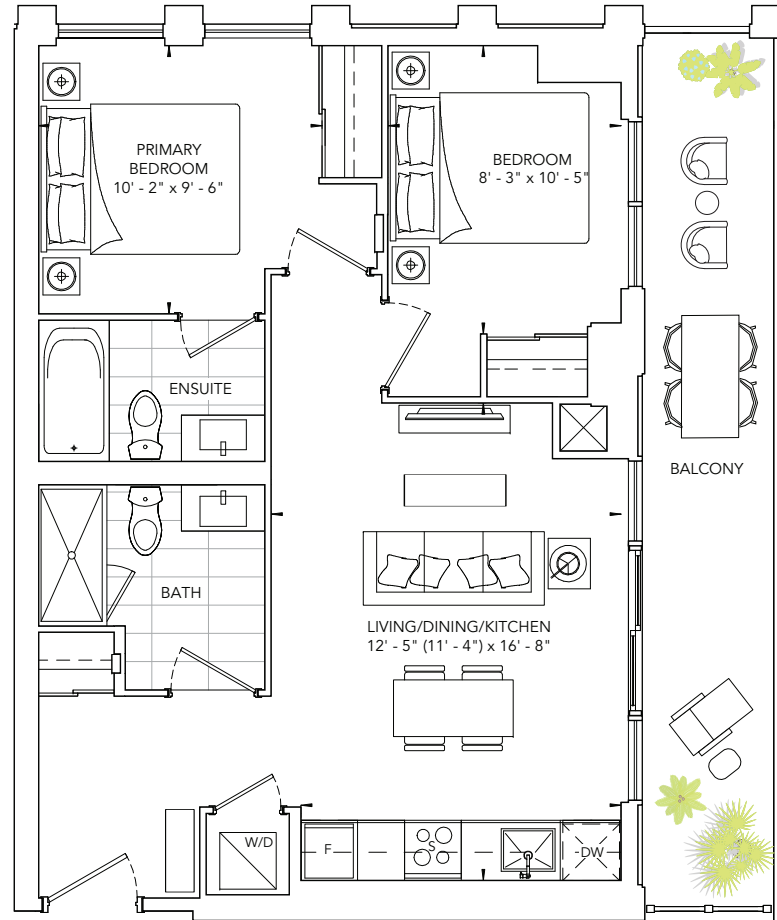
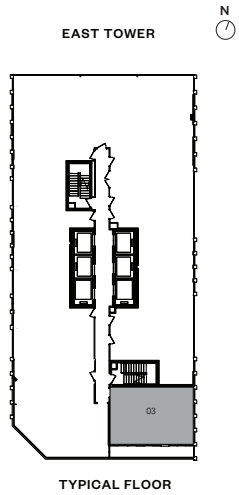
VALENCIA 698

TWO BEDROOM, TWO BATH
 INTERIOR: 698 SQ.FT. | EXTERIOR: 34 SQ.FT.



VALENCIA 697

TWO BEDROOM, TWO BATH
 INTERIOR: 697 SQ.FT. | EXTERIOR: 126 SQ.FT.



VALENCIA 699

TWO BEDROOM, TWO BATH
 INTERIOR: 699 SQ.FT. | EXTERIOR: 158 SQ.FT.

